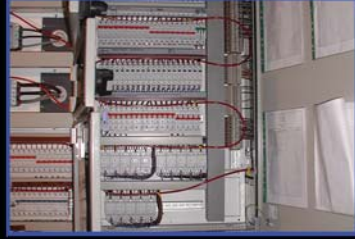
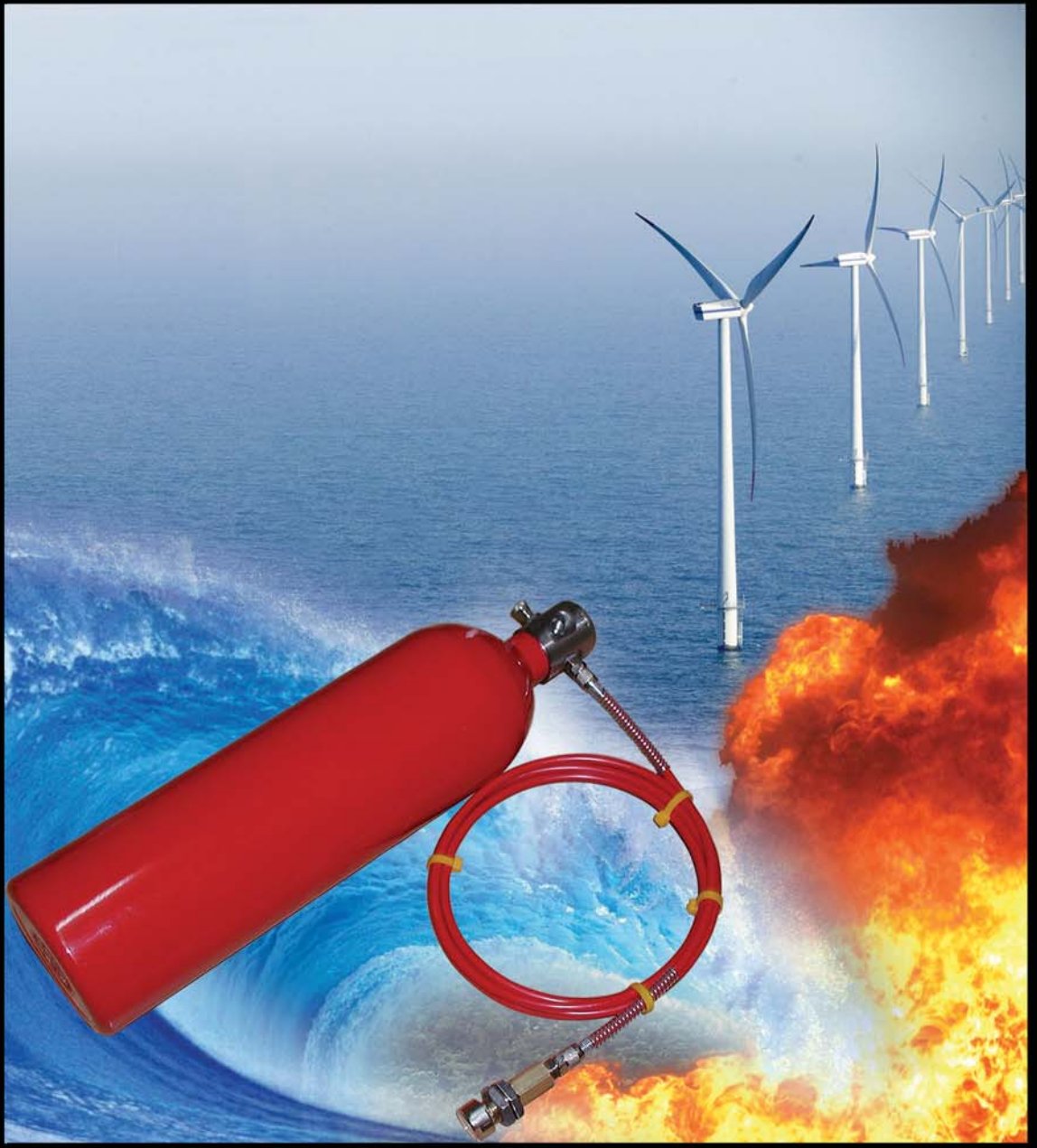


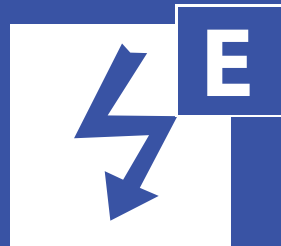
JEWEL[®] FIRE SYSTEMS S - SERIES



www.JewelFireSystems.com



Designed For:



S SERIES Direct

The S-Series, a 'Small Space' System: neat, simple and compact in design; for known risks, in defined areas. A versatile and adaptable system, the S-series suits a vast variety of applications, with fully tailor-able configuration options.



Technical Summary

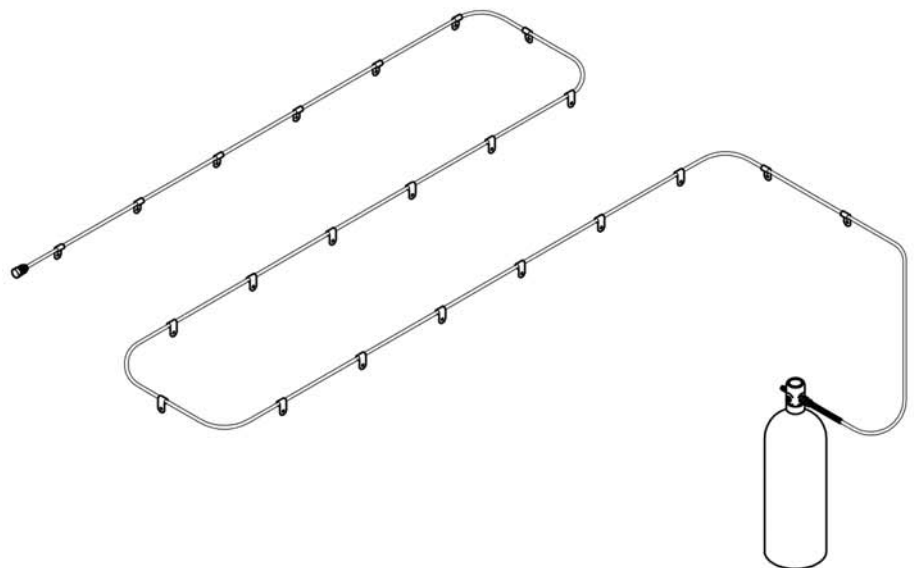
Design & Specification

System Activation: The S-Series is a pneumatic or mechanically activated system, which is totally self-contained. The 'Heat Triggered' Detection Line detects the fire at a pre-defined temperature; pneumatically or mechanically releasing the pressure and activating the valve. The valve activation triggers the discharged of the 'agent' onto the fire source, extinguishing the fire and preventing re-ignition.

Self Powering: The S-Series is a stand-alone system; independent of any form of power sources.

Agents

- A B C Powder
- B C Powder
- Monnex Powder
- Metal Powders
- AFFF Foam
- Alcohol Resistant Foam
- Wet Chemical
- JFS-500
- FM200
- Novec



System Mechanics

System specification range:

25-100 Micron
(Varies, Depending On Agent)

Overall system operating pressure:

4-16 Bar

Technical Specifications



80°C Detection Tube



108°C Detection Tube

Detection Options

- Pneumatic Linear Heat Detection Burst 'Trace' Tube, with 80°C or 108°C bursting threshold.

Valve

- Direct Activation Valve.
- Manual cable with Burst Bulb Technology (mechanically and pneumatically operated).



Direct Activation Valve



Manual Pneumatic Activation

Installation & Maintenance

The S-Series system installation follows a structured pathway:

1. Configuration of components to design specification
2. System installation and set-up; following manufacturer approved procedures
3. Fitting and installation carried out using manufacturer approved and supplied parts



Installation of the S-Series is a fast and efficient process due to the system modularity and a minimal number of parts.



Maintenance should be carried out in accordance with the manufacturer's warranty guidelines; which are defined according to the system and the risk.

Applications

- 'Clean Room' Environments (Laboratories)
- Catering & Food Production Environments
- Commercial and Public Buildings
- Cultural & Heritage Protection
- Hazardous & High-Risk Environments (Chemical)
- Hospital & Healthcare Environments
- Information Technology Locations (Server Rooms)
- Marine & Offshore Applications
- Mechanical, Machinery & Production Environments (Industrial)
- Off-Road / On-Road Vehicle Protection
- Public Transportation & Transportation Environments (Rail, Bus & Stations)
- Specialist Power and Energy Generation Facilities

Unit 22
Hazelford Way Industrial Estate,
Newstead,
Nottingham,
NG15 0DQ,
England

21 Davidson Street,
Morningshill,
Johannesburg 2007,
South Africa

P.O Box 86221,
Al Salahudin Street,
Deira,
Dubai,
United Arab Emirates

Denby Way,
Hellaby Industrial Estate,
Hellaby,
Rotherham,
S66 8HR,
England

E: Info@JewelFireSystems.com
T: 00 44 845 330 5406

www.JewelFireSystems.com
F: 00 44 845 330 5407