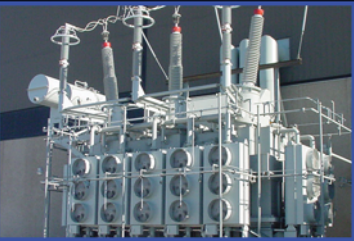


JEWEL[®]

FIRE SYSTEMS

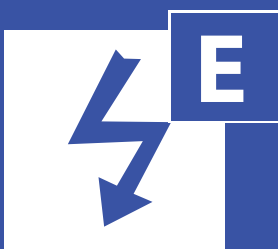
T SERIES



100% Environmentally friendly
Low pressure Dry Mist System
www.JewelFireSystems.com



Designed For:



Safe For:



Not Suitable For:

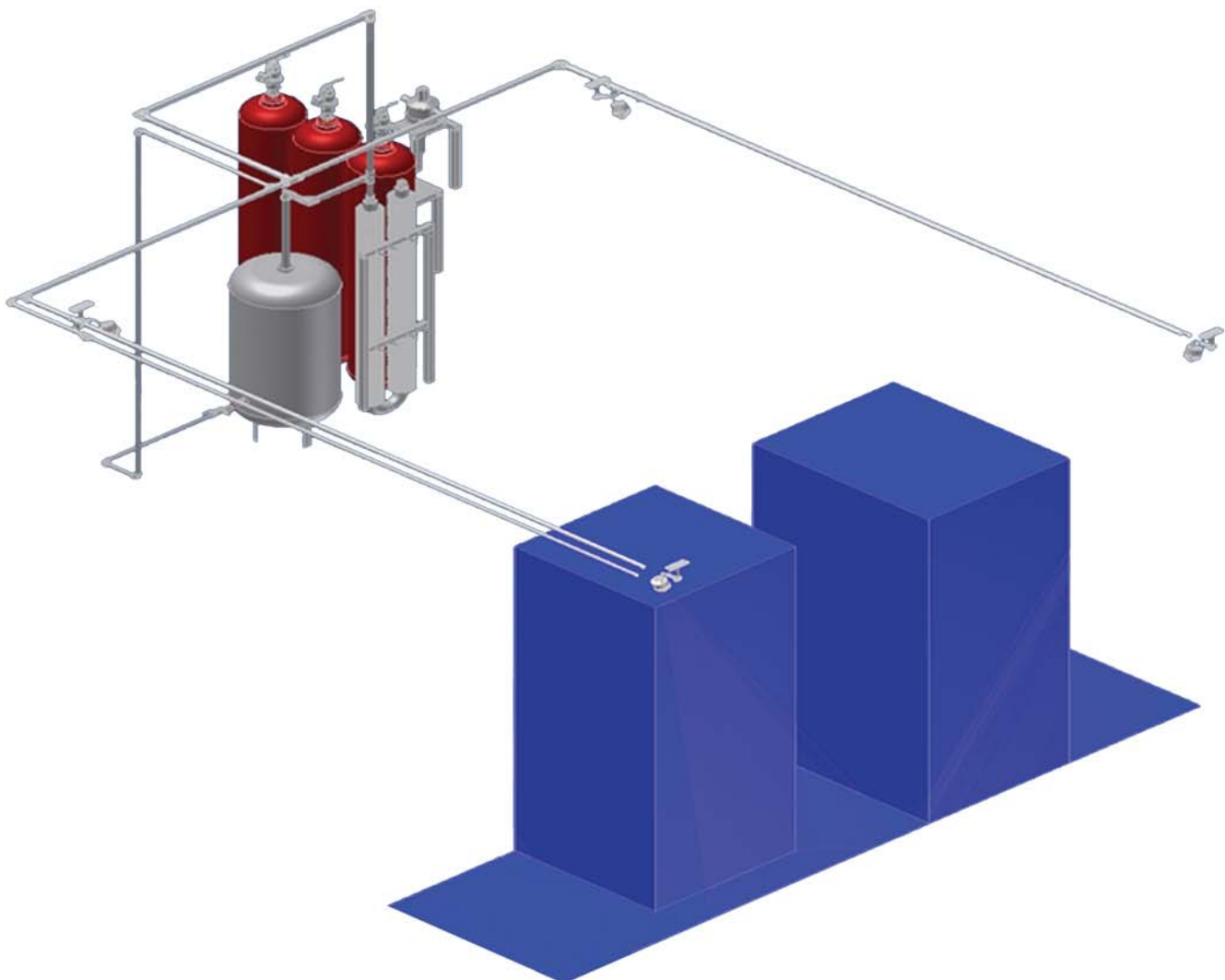


T SERIES Water Mist

A total flooding system, applied by either local application or total flooding, for multi-risk; specialising in Class B and Electrical Risks.

NEW: Low Pressure Dry Mist Technology

Based upon unique, patented low pressure 25 Micron Dry Water Mist the T-Series is a unique solution in the protection against large fires. Using advanced water mist technology the system not only extinguishes fire but also prevents re-ignition. The Dry Water Mist ensures no flooding or collateral damage.



Technical Summary

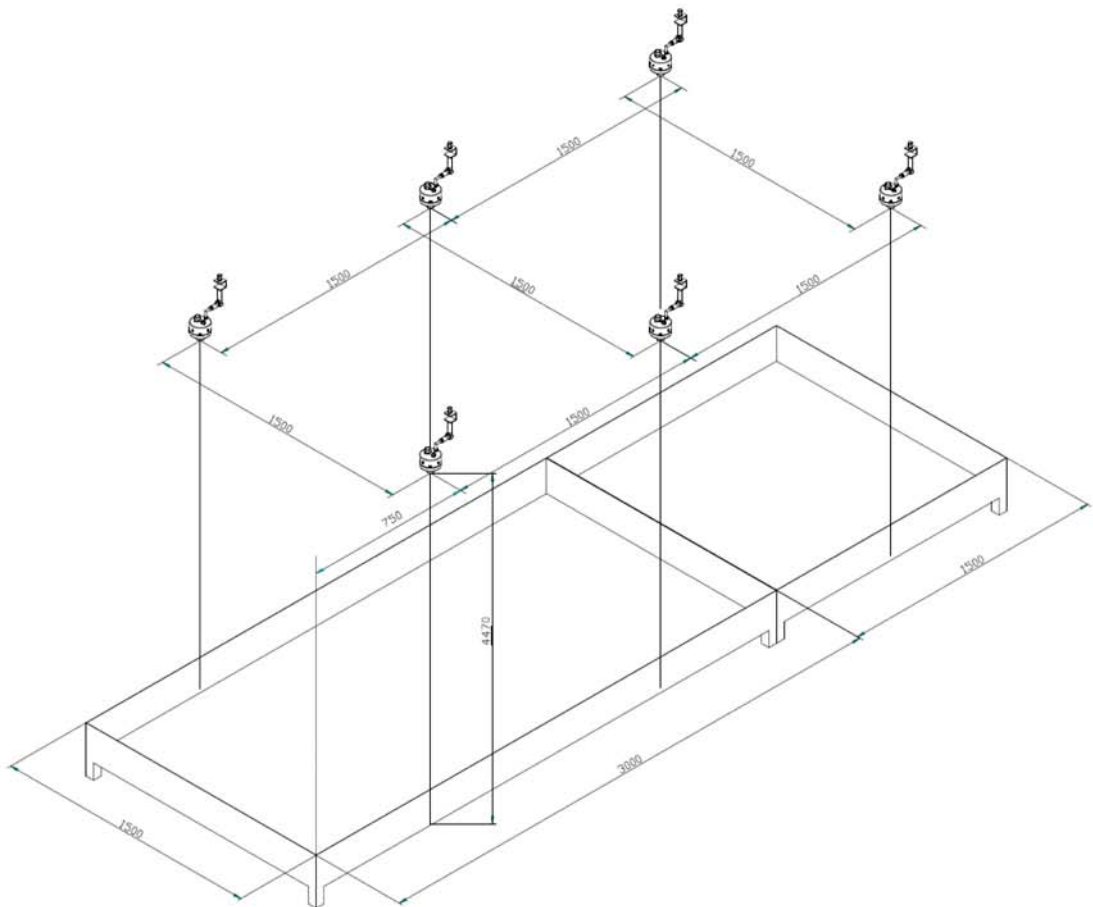
Design & Specification

The T-Series systems are calculated and designed by the following criteria:

1. Design to NFPA Guidelines
2. Room floor space and cubic volume
3. Fire risk including fuel class, quantity and potential temperature

Agent and volume of agent is calculated according to the above criteria considering pressure loss, flow rates and discharge time. In the case of gas based systems, the oxygen saturation point is considered within the calculations. (Google 'normal oxygen limit')

Example Schematic



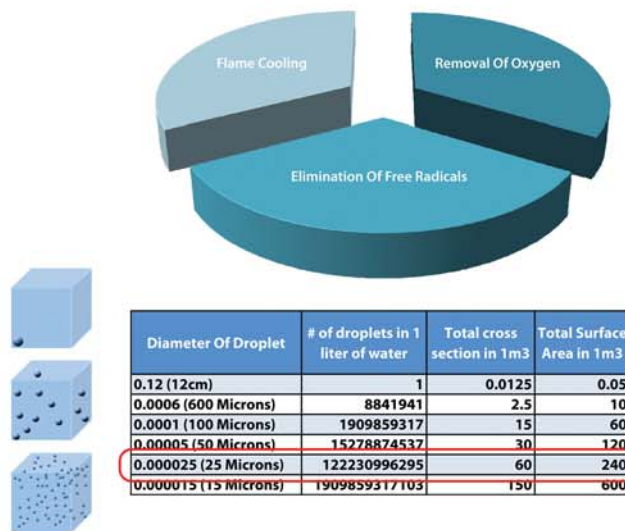
Agents

Low Pressure Dry Water Mist

Our unique patented Dry Water Mist operates at low pressure*. Atomising water into billions of droplets from as small as 25 microns in size. Designed to maximise fire fighting time and using a minimum amount of water, the S Series reduces down-time and collateral damage. The NEW technology turns the water, through the Dry Mist System into steam, evaporating and becoming dry in the event of a fire, significantly reducing damage to the risk area.

Support Agents

- FM200
- Novec
- IG-55
- CO2



Technical Specification

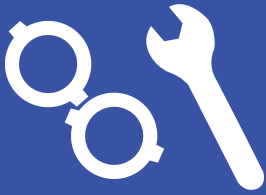
- Pressure reducing and flow control valve
- Patented Nozzle Technology

System Activation: The system is activated either manually or by receiving a sign from the commanding control panel (alarm system) to the solenoid valve. Upon activation the agent is released from a bank of pressurised cylinders through a series of calculate and strategically placed nozzles; extinguishing the fire and preventing re-ignition.



Installation & Maintenance

Installation is completed by the manufacturer or representative agent, following specified installation and commissioning protocols which are stated within the Operations Manual.



Maintenance should be carried out in accordance with the manufacturer's warranty guidelines; which are defined according to the system specification.

Applications

- 'Clean Room' Environments (Laboratories)
- Catering & Food Production Environments
- Commercial and Public Buildings
- Cultural & Heritage Protection
- Hazardous & High-Risk Environments (Chemical)
- Hospital & Healthcare Environments
- Information Technology Locations (Server Rooms)
- Marine & Offshore Applications
- Mechanical, Machinery & Production Environments (Industrial)
- Specialist Power and Energy Generation Facilities

Unit 22
Hazelford Way Industrial Estate,
Newstead,
Nottingham,
NG15 0DQ,
England

21 Davidson Street,
Morningshill,
Johannesburg 2007,
South Africa

P.O Box 86221,
Al Salahudin Street,
Deira,
Dubai,
United Arab Emirates

Denby Way,
Hellaby Industrial Estate,
Hellaby,
Rotherham,
S66 8HR,
England

E: Info@JewelFireSystems.com
T: 00 44 845 330 5406

www.JewelFireSystems.com
F: 00 44 845 330 5407